

The latest news on what's powering our neighborhoods



Download the myPSE app to help prepare for storm-related outages

Our mobile app makes it easier than ever to access your account and be notified about power outages, even when you're away from home. The app offers self-service functionality, allowing you to start or change your service, manage account preferences, view your energy usage, make a payment or setup a payment arrangement with just one click.

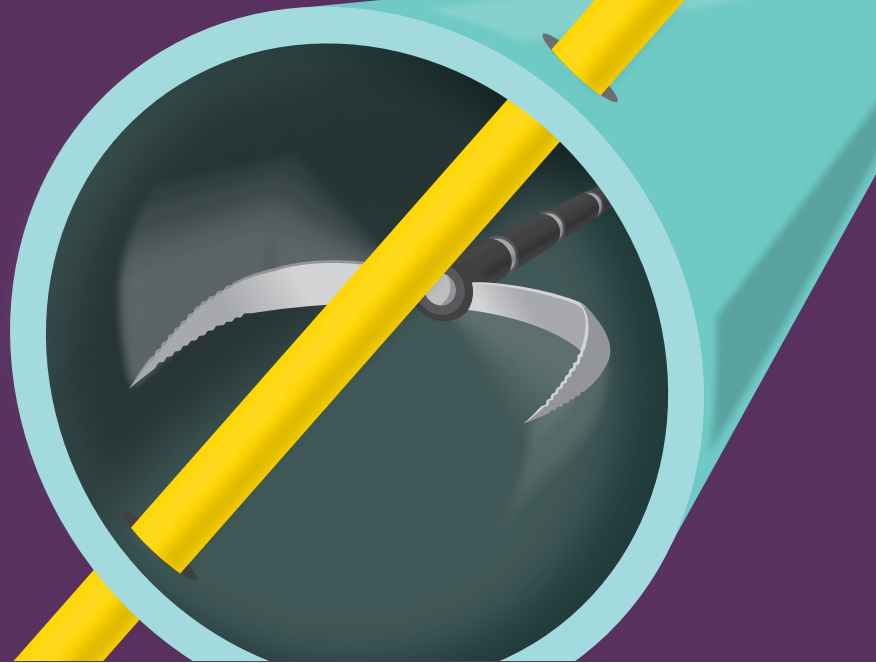
- Quickly see the status if your home loses power, and when it's been restored.
- Check your account balance, pay your bill and review your billing history.
- Manage personal preferences—select your desired bill due date or enroll in paperless billing.
- Change or update your account security, including password and security questions.
- Start, stop or move your residential service. And much more.



Call PSE before clearing a blocked sewer

Before clearing a blocked sewer or septic line, check for cross bores. That's when a natural gas line has been inadvertently installed through a sewer. Snaking the sewer could break the gas line, causing a dangerous leak. Call PSE before clearing. We'll meet your plumber for free to make sure it's safe to clear.

pse.com/sewersafety



You may qualify for assistance

Depending on income and household size, you may be eligible for payment assistance with your heating bill and for free energy-efficient improvements to your home. Recipients can receive up to \$1,000 in credits from the federal Low Income Home Energy Assistance Program (LIHEAP) and another \$1,000 in credits from PSE's Home Energy Lifeline Program (HELP). Contact your local energy-assistance agency at **1-866-223-5425**.

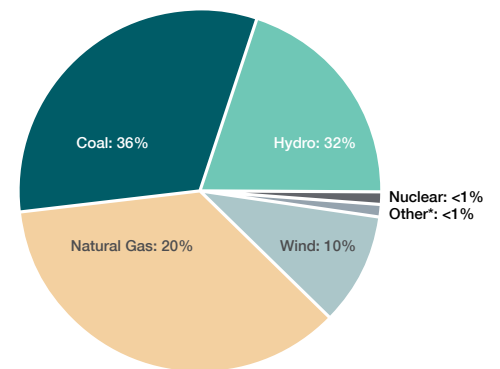


Diverse resources powering your home and business

The electricity generated for you uses a diverse mix of resources. The fuel mix resources used for generating electricity delivered in 2018 are shown in the chart and graph:

2018 electricity fuel mix

Coal	36%
Hydroelectric	32%
Natural Gas	20%
Nuclear	<1%
Other*	<1%
Wind	10%
Total	100%



* Biomass, non-biogenic, and petroleum.

Source: Published by the Washington Department of Commerce, October 2019, with data reported by PSE in August 2019.